

Elements - Evolve Reporting

Cdg's Reporting element helps you make the most of your data by giving you an easy way to create custom queries for your database information and produce analytics and reports from the query results.

OVERVIEW

CDG's Reporting element is a web-based query creation tool that allows you to quickly set up database queries through easy-to-use "Views" and define the output that is created from the query results. Whether you need to create a custom report, a Business Intelligence gadget, or a targeted email campaign, Reporting can do it all.

Reporting works with all of the Element service families as well as associated elements, such as Ticketing, Network Elements, and Workflow.

REPORTING FEATURES

- Create queries for a variety of categories using the query selection criteria or create custom queries.
- Use queries to generate reports, create Business Intelligence gadgets, develop email campaigns, or define updates.
- Set up public queries with update or read-only access, or create a private query.
- Set up common queries with different parameters.
- Create runtime prompts.
- Use Reporting to find errors or problems (i.e. checking to make sure business rules are being followed) and email the results to specific groups or individuals.

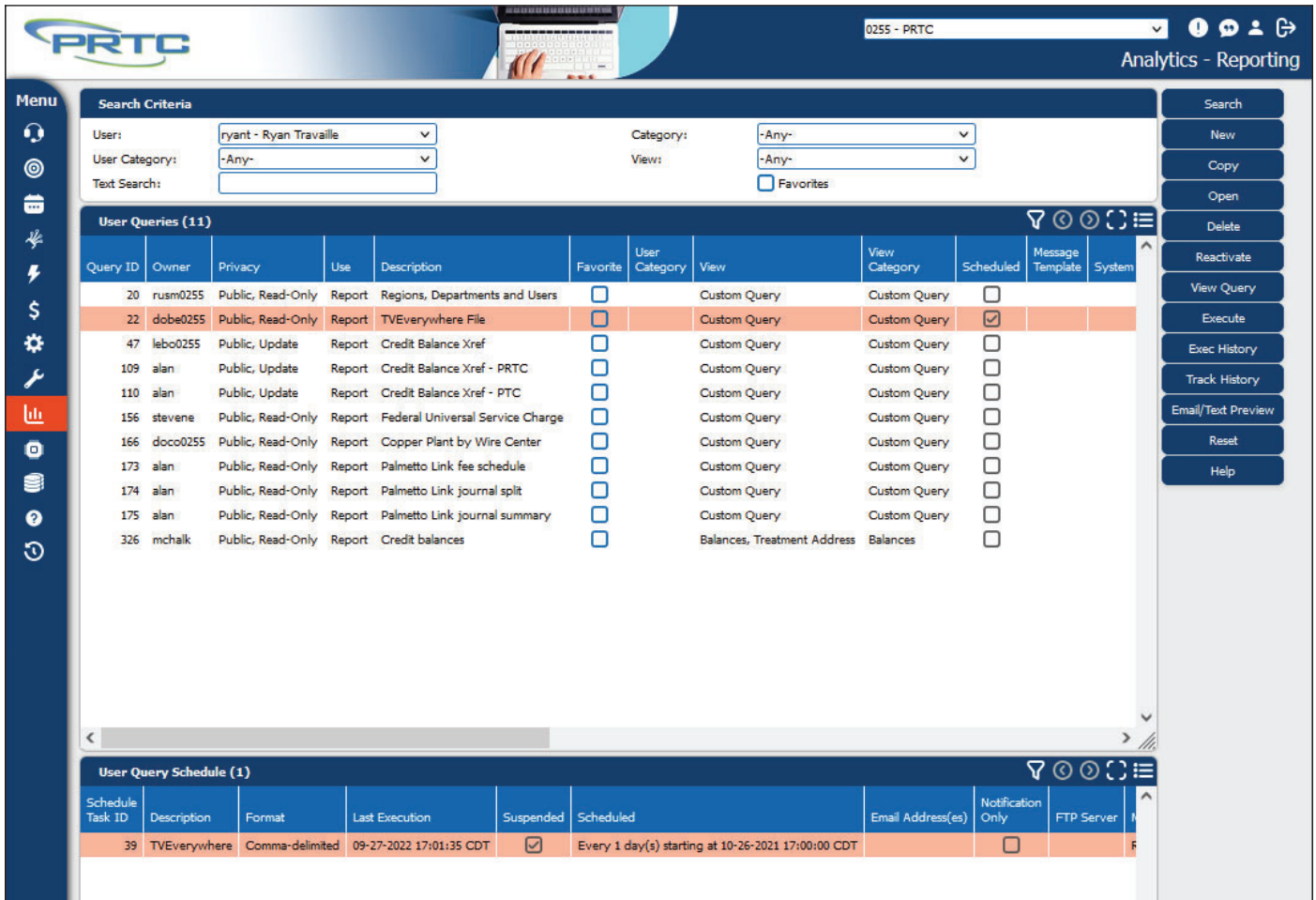


Fig. 1 Reporting